

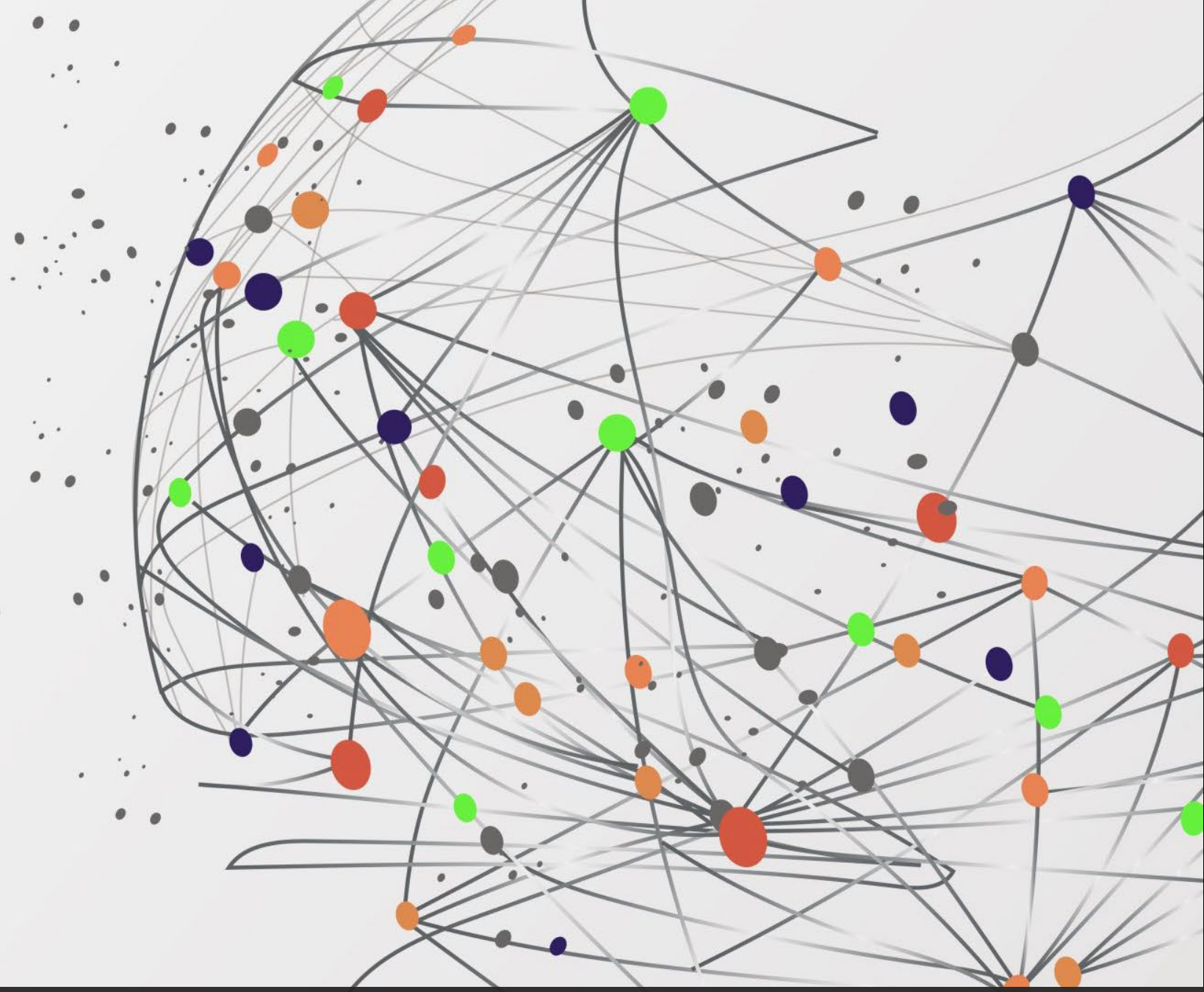
# Open Discussion

---

SacPAS Workshop

December 6, 2023

Sacramento CA & online





# Open Discussion

---



**Questions**



**Comments**



**Insights**



# Revisit workshop goals & objectives

1. Provide stakeholders greater awareness of SacPAS tools
2. Streamline data management processes
3. Refine tools with better understanding of users' needs
4. Receive requests for new tools to be developed

# 1. Provide stakeholders greater awareness of SacPAS tools

Walk through additional examples of SacPAS tools:  
“Choose your own adventure”

**SacPAS: Central Valley Prediction & Assessment of Salmon**

Home | Data Queries & Alerts | Work Groups & Teams | Fish Model | Tools | Contact

**Alert: Sacramento River Weirs Overtopping**

Weir	NWS Forecast 11/19	NWS Forecast 11/18	NWS Forecast 11/17	NWS Forecast 11/16	Today Peak	Today Hour	11/14	11/13	11/12	11/11	11/10	11/09	11/08	11/07	11/06	11/05
MW	< -0.50	< -0.50	< -0.50	< -0.50			< -0.50	< -0.50	< -0.50	< -0.50	< -0.50	< -0.50	< -0.50	< -0.50	< -0.50	< -0.50
CLW	< -0.50	< -0.50	< -0.50	< -0.50			< -0.50	< -0.50	< -0.50	< -0.50	< -0.50	< -0.50	< -0.50	< -0.50	< -0.50	< -0.50
TIS	< -0.50	< -0.50	< -0.50	< -0.50			< -0.50	< -0.50	< -0.50	< -0.50	< -0.50	< -0.50	< -0.50	< -0.50	< -0.50	< -0.50
FRE	-20.08	-20.10	-20.10	-20.10	-19.94	0100	-20.01	-20.03	-20.18	-20.35	-20.14	-20.03	-19.82	-19.81	-19.77	-19.69

View Analyst for: 9872954 - Select

**SacPAS: Central Valley Prediction & Assessment of Salmon**

Home | Data Queries & Alerts | Work Groups & Teams | Fish Model | Tools | Contact

**Juvenile Salvage & Loss**

Salvage and Loss Summary

Salvage and Loss Summary tables of Chinook and Steelhead, unclipped and clipped, at SWP and CVP Delta Fish Facilities.

Salvage and Loss Summary

Salvage and Loss Summary tables of Chinook and Steelhead, unclipped and clipped, at SWP and CVP Delta Fish Facilities, additionally Clipped and Overtight Sampling Patterns.

Salvage and Loss Summary

Salvage and Loss Summary tables of Chinook and Steelhead, unclipped and clipped, at SWP and CVP Delta Fish Facilities.

Salvage and Loss Summary

Salvage and Loss Summary tables of Chinook and Steelhead, unclipped and clipped, at SWP and CVP Delta Fish Facilities.

**SacPAS: Central Valley Prediction & Assessment of Salmon**

Home | Data Queries & Alerts | Work Groups & Teams | Fish Model | Tools | Contact

**Delta Loss**

Delta Loss Summary

Delta Loss Summary tables of Chinook and Steelhead, unclipped and clipped, at SWP and CVP Delta Fish Facilities.

Delta Loss Summary

Delta Loss Summary tables of Chinook and Steelhead, unclipped and clipped, at SWP and CVP Delta Fish Facilities.

Delta Loss Summary

Delta Loss Summary tables of Chinook and Steelhead, unclipped and clipped, at SWP and CVP Delta Fish Facilities.

Delta Loss Summary

Delta Loss Summary tables of Chinook and Steelhead, unclipped and clipped, at SWP and CVP Delta Fish Facilities.

**SacPAS: Central Valley Prediction & Assessment of Salmon**

Home | Data Queries & Alerts | Work Groups & Teams | Fish Model | Tools | Contact

**SacPAS Fish Model v3.7.0: Sacramento River Chinook egg to fry development and in-river migration**

SacPAS Fish Model v3.7.0: Sacramento River Chinook egg to fry development and in-river migration

SacPAS Fish Model v3.7.0: Sacramento River Chinook egg to fry development and in-river migration

SacPAS Fish Model v3.7.0: Sacramento River Chinook egg to fry development and in-river migration

SacPAS Fish Model v3.7.0: Sacramento River Chinook egg to fry development and in-river migration

**SacPAS: Central Valley Prediction & Assessment of Salmon**

Home | Data Queries & Alerts | Work Groups & Teams | Fish Model | Tools | Contact

**Sacramento River Temperature Thresholds**

Sacramento River Temperature Thresholds for winter-run Chinook, spring-run Chinook, CVP Steelhead, and Southern OTC in green winged goby.

Sacramento River Temperature Thresholds for winter-run Chinook, spring-run Chinook, CVP Steelhead, and Southern OTC in green winged goby.

Sacramento River Temperature Thresholds for winter-run Chinook, spring-run Chinook, CVP Steelhead, and Southern OTC in green winged goby.

Sacramento River Temperature Thresholds for winter-run Chinook, spring-run Chinook, CVP Steelhead, and Southern OTC in green winged goby.

**SacPAS: Central Valley Prediction & Assessment of Salmon**

Home | Data Queries & Alerts | Work Groups & Teams | Fish Model | Tools | Contact

**River Conditions Graph & Text Query**

River Conditions Graph & Text Query

River Conditions Graph & Text Query

River Conditions Graph & Text Query

River Conditions Graph & Text Query

River Conditions Graph & Text Query

**SacPAS: Central Valley Prediction & Assessment of Salmon**

Home | Data Queries & Alerts | Work Groups & Teams | Fish Model | Tools | Contact

**Exposure Index River Conditions**

Exposure Index | River Graph | River Value Min / Max Lookup | Methods

Exposure Index online data value tool calculates user-specified exposure levels for observed River Conditions at locations in the Central Valley (Sacramento River, San Joaquin, and Delta).

Exposure Index online data value tool calculates user-specified exposure levels for observed River Conditions at locations in the Central Valley (Sacramento River, San Joaquin, and Delta).

Exposure Index online data value tool calculates user-specified exposure levels for observed River Conditions at locations in the Central Valley (Sacramento River, San Joaquin, and Delta).

**SacPAS: Central Valley Prediction & Assessment of Salmon**

Home | Data Queries & Alerts | Work Groups & Teams | Fish Model | Tools | Contact

**Delta STABS R10v.0.0**

Delta STABS R10v.0.0

Delta STABS R10v.0.0

Delta STABS R10v.0.0

Delta STABS R10v.0.0

## 2. Streamline open data & database management processes

How can we help meet your needs and bridge with your processes?



### 3. Refine tools with better understanding of users' needs

SacPAS aims to provide online tools to help users' specific needs

#### Examples of users' needs:

Planning management scenarios

Tracking performance of seasonal and annual management objectives

Providing data for real-time monitoring assessments and handouts



## 4. Receive requests for new tools to be developed

Handout for any  
Inquiries or Requests

Step through one  
as an example

Any questions?



# Open Discussion

---

Walkthrough of a particular page, tool, process, metric

---

Datasets or specific parameters to be added

---

Queries to be added or edited

---

Visualizations to be added or edited

---

How to improve SacPAS usability

---

How to make your data more available and accessible

---

Suggestions for increasing SacPAS data transparency, availability

---

Request for edits to existing modeling tools

---

Request for new page with specific compilation of features

---

Request for new tool



# Open Discussion

- What data sets/ data metrics do you think would be useful to have on SacPAS that are not there yet?
- What data summaries, visualizations could you use for explaining decisions made to the public?
- What tasks do you do manually that could possibly be automated?
  - Why do you continue to do the tasks manually?  
(Security/ always done this way/ did not know it could be automated/ don't know how to automate/ lack of time or resources to make it happen\ other)

# Open Discussion

---



**What decision do you make in which you refer to real-time data, forecasted data, and/or historical data?**

**Can you please describe your process and timeline so that we have a better idea?**



**What supportive resources would you find useful?**

Manuals (PDF files)

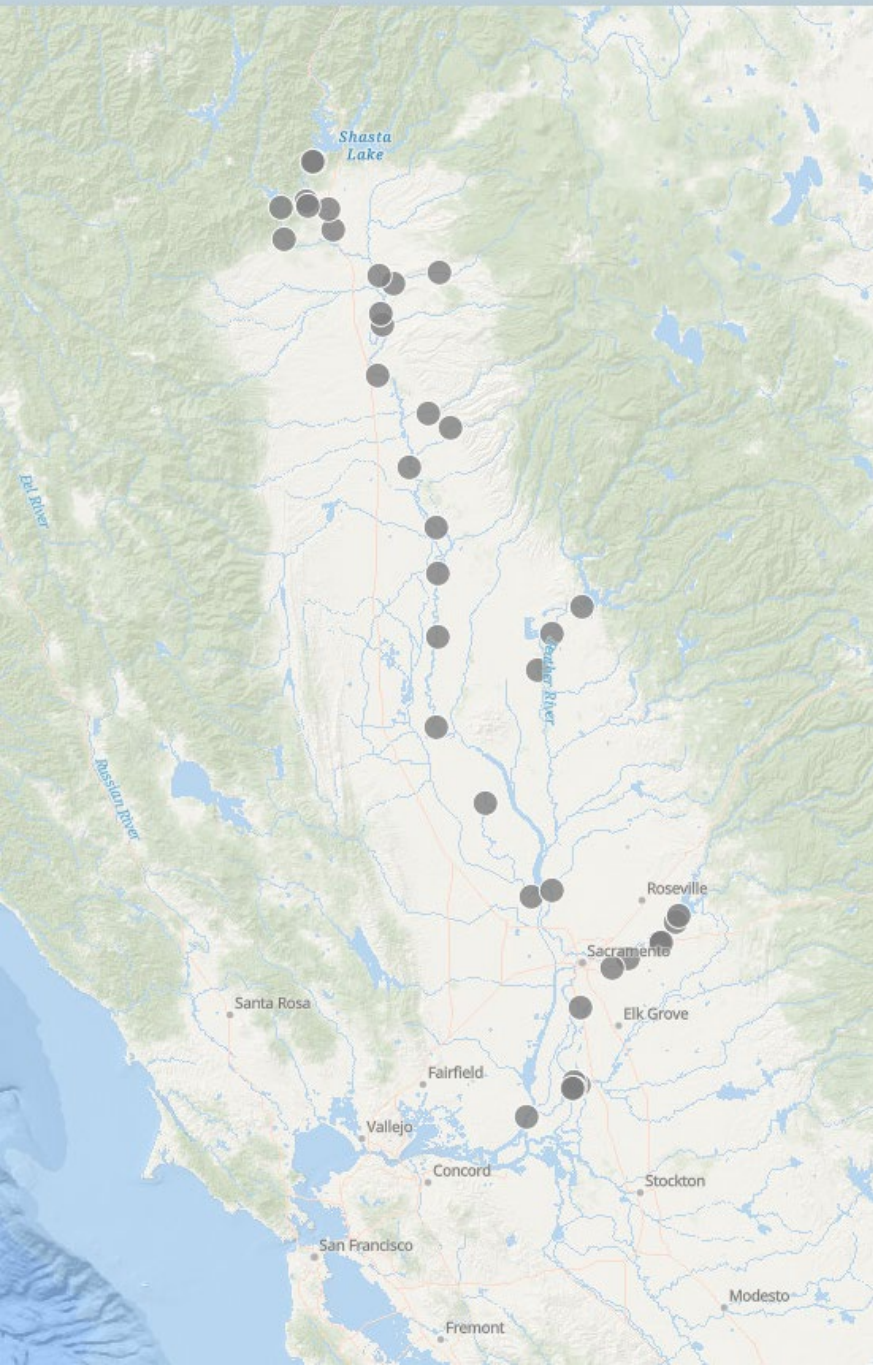
Interactive manuals

Video tutorials

Chatting with a SacPAS team member

Time to explore the website and try queries

Workshops and shared presentations



# Open Discussion

- For folks interested in a map-based interface to a query, can you please talk through what aspects of the map you find important and useful to have? Can you describe how you are seeing and interpreting the information in reference to the map?
- As an exercise, would anyone like to answer questions in the SacPAS online tool request form and explore ideas?